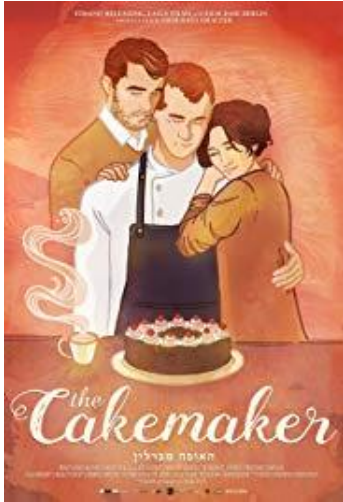


The Reel Thinking Series of the
Alliance for Psychoanalytic Thought (aPt) Presents...

What is Love?



The Cakemaker

Date: Sunday, October 6, 2019
Discussants: Elaine Hyman, PsyD; Scott Shaeffer
Time: 2:00 pm - 5:00 pm

After the passing of his married Israeli lover, Oren, a young German baker named Thomas travels to Jerusalem for answers. While keeping this a secret, he begins to work at a small café for Anat, Oren's widow. Thomas' cakes start to gain the attention of the city and he becomes increasingly involved in Anat's life, making it harder and harder to keep his secret.

Other People

Date: Sunday, November 3, 2019
Discussant: TBA
Time: 2:00 pm - 5:00 pm

A struggling comedy writer, fresh off a breakup and in the midst of the worst year of his life, returns to Sacramento to care for his dying mother.



Love, Simon

Date: Sunday, December 1, 2019
Discussant: TBA
Time: 2:00 pm - 5:00 pm

Simon Spier keeps a huge secret from his family, his friends and all of his classmates: he's gay. When that secret is threatened, Simon must face everyone and come to terms with his identity.

Tangerine

Date: Sunday, January 5, 2020
Discussant: TBA
Time: 2:00 pm - 5:00 pm

A prostitute tears through Tinseltown on Christmas Eve searching for the pimp who broke her heart.



PROGRAM DESCRIPTION

This series will consider the meaning and expressions of love from a psychoanalytic perspective as portrayed in film. The medium of film will allow us to explore the developmental, intra psychic and interpersonal manifestations of one of our most basic emotions.

EDUCATIONAL OBJECTIVES

At the end of this presentation, participants will be able to:

1. From a Psychoanalytic perspective, describe how love is portrayed in contemporary film
2. What does psychoanalytic thinking add to our understanding of love in the modern world?
3. How does the notion of love change through different developmental stages of life?

CONTINUING MEDICAL EDUCATION/CONTINUING EDUCATION

Continuing Medical Education (CME):

This activity has been planned and implemented in accordance with the accreditation requirements and policies of the Accreditation Council for Continuing Medical Education (ACCME) through the joint providership of American Psychoanalytic Association and the Psychoanalytic Center of Philadelphia. The American Psychoanalytic Association is accredited by the ACCME to provide continuing medical education for physicians.

The American Psychoanalytic Association designates this Live Activity for a maximum of 12 AMA PRA Category 1 Credit(s)[™]. Physicians should claim only the credit commensurate with the extent of their participation in the activity.

IMPORTANT DISCLOSURE INFORMATION FOR ALL LEARNERS: None of the planners and presenters of this CME program have any relevant financial relationships to disclose.



Continuing Education for Psychologists (CE):

The Psychoanalytic Center of Philadelphia is approved by the American Psychological Association to sponsor continuing education for psychologists. The Psychoanalytic Center of Philadelphia maintains responsibility for this program and its content. Every session of this program offers CE credit for psychologists.

Continuing Education for Social Workers, Marriage and Family Therapists, and Professional Counselors (CE):

In accordance with the requirements of the Commonwealth of PA dated 12/23/06 [PA Code: Title 49, Ch. 47-49], The State Board of Social Workers, Marriage and Family Therapists, and Professional Counselors recognizes the American Psychological Association (APA) as a preapproved provider of continuing education programs for social workers and clinical social workers, marriage and family therapists, and professional counselors in the State of Pennsylvania. The Psychoanalytic Center of Philadelphia is approved by the American Psychological Association to sponsor continuing education programs.

For more information, please contact the administrative office of the Psychoanalytic Center of Philadelphia:

Rockland - East Fairmount Park
3810 Mt. Pleasant Drive
Philadelphia, PA 19121
215-235-2345
pcop@philanalysis.org

Location of All Events

Rockland—
East Fairmount Park
3810 Mt. Pleasant Drive
Philadelphia, PA 19121
215-235-2345

3 CE/CME credits available per film

Free for PCOP Members
Free for Non-Members not Seeking Credit
\$75 for Non-Members Seeking Credit (per film)

Register online at www.philanalysis.org