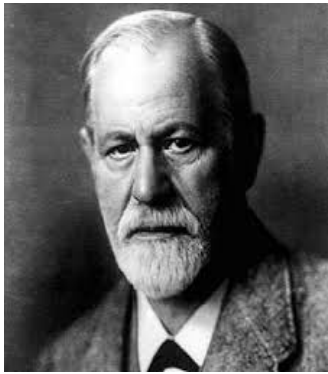


*The Reel Thinking Series of the  
Alliance for Psychoanalytic Thought (aPt) Presents...*

## Psychoanalysis and the Mind



### **SIGMUND FREUD – THE FATHER OF PSYCHOANALYSIS**

**Date:** Sunday, September 9, 2018  
**Discussants:** John Frank, MD  
**Time:** 2:00 pm – 5:00 pm

Sigmund Freud revolutionized our thinking about the human mind, but who was this man and how do his theories hold up today? This NOVA/BBC documentary explores the life and times of Sigmund Freud.

### **CENTURY OF THE SELF**

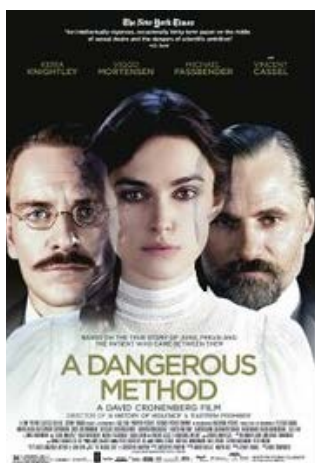
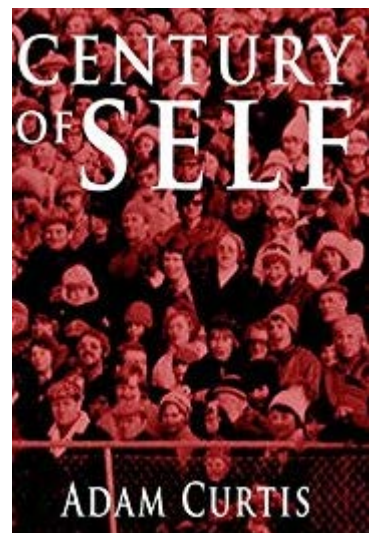
#### **PARTS 1 & 2**

**Date:** Sunday, October 7, 2018  
**Discussant:** Elio Frattaroli, MD  
**Time:** 2:00 pm – 5:00 pm

#### **PARTS 3 & 4**

**Date:** Sunday, November 4, 2018  
**Discussant:** Theodore Fallon, MD, MPH  
**Time:** 2:00 pm – 5:00 pm

A documentary about the rise of psychoanalysis as a powerful means of persuasion for both governments and corporations.



### **A DANGEROUS METHOD**

**Date:** Sunday, December 2, 2018  
**Discussant:** Peter Hoffer, PhD; Anne Malone, MSS, LCSW  
**Time:** 2:00 pm – 5:00 pm

A look at how the intense relationship between Carl Jung and Sigmund Freud gives birth to psychoanalysis.

### **WHEN NIETZSCHE WEPT**

**Date:** Sunday, January 6, 2019  
**Discussant:** Jeremy Elkins, PhD  
**Time:** 2:00 pm – 5:00 pm

Viennese doctor Josef Breuer meets with philosopher Friedrich Nietzsche to help him deal with his despair.



## PROGRAM DESCRIPTION

These program series will consider psychoanalysis through two documentaries and two fictionalized stories portrayed in film. These mediums will illustrate some of the ways psychoanalysis impacts our thinking and actions in our modern day world both privately and publicly.

This series will run from September 2018 through April 2019; more information about the spring programs will be forthcoming.

## EDUCATIONAL OBJECTIVES

At the end of this presentation, participants will be able to:

1. Describe how psychoanalysis is portrayed in contemporary film.
2. Describe the ways psychoanalysis is seen as impacting our public life.
3. Describe the ways psychoanalysis impacts our private thinking.

## CONTINUING MEDICAL EDUCATION/CONTINUING EDUCATION

### **Continuing Medical Education (CME):**

This activity has been planned and implemented in accordance with the accreditation requirements and policies of the Accreditation Council for Continuing Medical Education (ACCME) through the joint providership of American Psychoanalytic Association and the Psychoanalytic Center of Philadelphia. The American Psychoanalytic Association is accredited by the ACCME to provide continuing medical education for physicians.

The American Psychoanalytic Association designates this Live Activity for a maximum of 15 AMA PRA Category 1 Credit(s)<sup>™</sup>. Physicians should claim only the credit commensurate with the extent of their participation in the activity.

**IMPORTANT DISCLOSURE INFORMATION FOR ALL LEARNERS:** None of the planners and presenters of this CME program have any relevant financial relationships to disclose.



### **Continuing Education for Psychologists (CE):**

The Psychoanalytic Center of Philadelphia is approved by the American Psychological Association to sponsor continuing education for psychologists. The Psychoanalytic Center of Philadelphia maintains responsibility for this program and its content. Every session of this program offers CE credit for psychologists.

**Continuing Education for Social Workers, Marriage and Family Therapists, and Professional Counselors (CE):** In accordance with the requirements of the Commonwealth of PA dated 12/23/06 [PA Code: Title 49, Ch. 47-49], The State Board of Social Workers, Marriage and Family Therapists, and Professional Counselors recognizes the American Psychological Association (APA) as a preapproved provider of continuing education programs for social workers and clinical social workers, marriage and family therapists, and professional counselors in the State of Pennsylvania. The Psychoanalytic Center of Philadelphia is approved by the American Psychological Association to sponsor continuing education programs.

### **For more information, please contact the administrative office of the Psychoanalytic Center of Philadelphia:**

Rockland – East Fairmount Park  
3810 Mt. Pleasant Drive  
Philadelphia, PA 19121  
215-235-2345  
[pcop@philanalysis.org](mailto:pcop@philanalysis.org)

<p><b>Location of All Events</b></p> <p>Rockland – East Fairmount Park 3810 Mt. Pleasant Drive Philadelphia, PA 19121 215-235-2345</p>	<p>3 CE/CME credits available per film</p> <p><b>Free for PCOP Members</b> <b>Free for Non-Members not Seeking Credit</b> <b>\$75 for Non-Members Seeking Credit (per film)</b></p> <p>Register online at <a href="http://www.philanalysis.org">www.philanalysis.org</a></p>
--	--