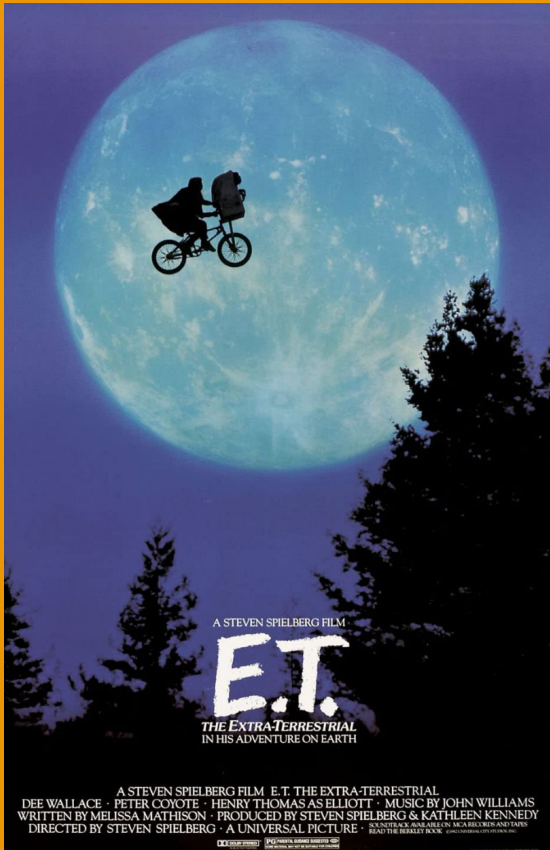


Reel Thinking presents...

ET: THE EXTRA TERRESTRIAL

Sunday, June 12, 2022 2:00 pm to 5:00 pm

Discussion Leader: John Frank, MD



ET is a movie that was released on June 11, 1982. Forty years after its release, we will be playing and discussing the film for Reel Thinking on June 12, 2022.

The movie is based on the story of a lonely 10-year-old boy, Elliott, who befriends an extra-terrestrial alien ET, who gets trapped on this earth. The story explores the unique "connection" between them and details the nerve-racking adventures Elliott undertakes in the midst of threat to his and ET's life. He helps to safely navigate ET away from the government agencies and help him return to his spaceship.

.....

Dr. John Frank is on the faculty of the Psychoanalytic Center of Philadelphia where he was Chair of the Education Division and developed Clinical Encounter groups for graduates of the Psychoanalytic Psychotherapy program. He is Clinical Professor Emeritus of Psychiatry and Pediatrics at Drexel University College of Medicine where he was the Director of the Child/Adolescent Residency Training and Director of the Child and Adolescent Outpatient Service for many years. He has chaired discussion groups at the American Psychoanalytic Association dealing with gay identity and diverse gender experience in children and adolescence and has published papers and book chapters on the psychodynamics of trauma.

This year's Reel Thinking series will focus on American and International films with themes of developmental phases in adolescent and elderly age groups. Discussion will focus on psychosocial, cultural, and psychoanalytic perspectives that are helpful in clinical settings, including psychotherapy, and in overcoming conscious and unconscious biases.

CLICK HERE TO REGISTER

3 CE/CME credits available per film

Free for PCOP Members

Free for Non-Members not Seeking Credit

\$75 for Non-Members Seeking Credit

EDUCATIONAL OBJECTIVES

At the end of this presentation, participants will be able to:

1. Describe the known psychoanalytic perspectives of developmental phases in adolescents and elderly.
2. List the effects of developmental challenges in adolescents and elderly on their mental health and psychosocial outcomes.
3. Assess, explain and critique conscious and unconscious biases, role of these in transference and countertransference
4. Design and create how they survive these social challenges, cope with it and develop resiliency to enhance themselves and contribute to the goodness of society

CONTINUING MEDICAL EDUCATION/CONTINUING EDUCATION

Continuing Medical Education (CME):

This activity has been planned and implemented in accordance with the accreditation requirements and policies of the Accreditation Council for Continuing Medical Education (ACCME) through the joint providership of American Psychoanalytic Association and the Psychoanalytic Center of Philadelphia. The American Psychoanalytic Association is accredited by the ACCME to provide continuing medical education for physicians.

The American Psychoanalytic Association designates this Live Activity for a maximum of 3 AMA PRA Category 1 Credit(s)™. Physicians should claim only the credit commensurate with the extent of their participation in the activity.

IMPORTANT DISCLOSURE INFORMATION FOR ALL LEARNERS: None of the planners and presenters for this educational activity have relevant financial relationship(s)* to disclose with ineligible companies whose primary business is producing, marketing, selling, re-selling, or distributing healthcare products used by or on patients.

*Financial relationships are relevant if the educational content an individual can control is related to the business lines or products of the ineligible company.

- Updated July 2021 -



Continuing Education for Psychologists (CE):

The Psychoanalytic Center of Philadelphia is approved by the American Psychological Association to sponsor continuing education for psychologists. The Psychoanalytic Center of Philadelphia maintains responsibility for this program and its content. Every session of this program offers CE credit for psychologists.

Continuing Education for Social Workers, Marriage and Family Therapists, and Professional Counselors (CE): In accordance with the requirements of the Commonwealth of PA dated 12/23/06 [PA Code: Title 49, Ch. 47-49], The State Board of Social Workers, Marriage and Family Therapists, and Professional Counselors recognizes the American Psychological Association (APA) as a preapproved provider of continuing education programs for social workers and clinical social workers, marriage and family therapists, and professional counselors in the State of Pennsylvania. The Psychoanalytic Center of Philadelphia is approved by the American Psychological Association to sponsor continuing education programs.

For more information, please contact the Psychoanalytic Center of Philadelphia:

Rockland - East Fairmount Park

3810 Mt. Pleasant Drive Philadelphia, PA 19121

215-235-2345

pcop@philanalysis.org

The Psychoanalytic Center of Philadelphia is committed to reasonable accommodations for any member or program attendee with a disability, unless doing so would cause significant hardship to the organization. Advance written notice is necessary to arrange for some accessibility needs. To request accommodations for this program, please click here to complete an Accommodation Request Form.