

*The Reel Thinking Series of the  
Alliance for Psychoanalytic Thought (aPt) Presents...*

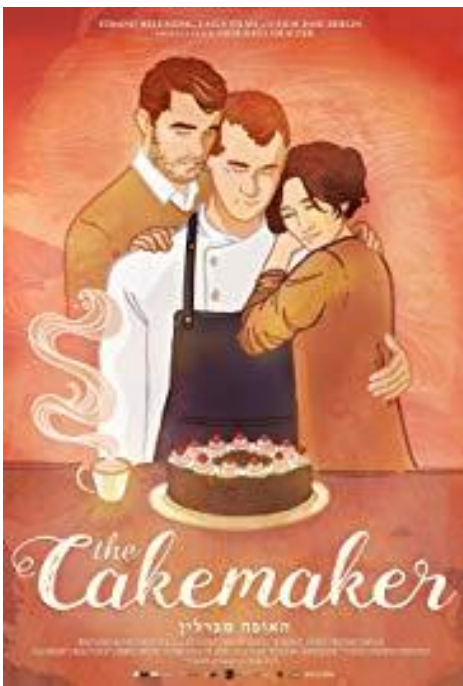
*What is Love?*

# *The Cakemaker*

**Date:** Sunday, October 6, 2019

**Discussants:** Elaine Hyman, PsyD; Scott Shaeffer

**Time:** 2:00 pm - 5:00 pm



After the passing of his married Israeli lover, Oren, a young German baker named Thomas travels to Jerusalem for answers. While keeping his secret, he begins to work at a small café for Anat, Oren's widow. Thomas' cakes start to gain the attention of the city and he becomes increasingly involved in Anat's life, making it harder and harder to keep his secret.

## **Discussants:**

**Elaine Hyman, PsyD**, is an analyst member of PCOP where she also teaches. She has a background degree in English Literature and a long-time interest in art films. As regards the upcoming film discussion, Dr. Hyman has a very basic fluency with Hebrew language as well as Israeli and Jewish culture and European Jewish culture.

**Scott Shaeffer** is an MSW student at West Chester University, and a Fellow at PCOP. Scott has worked in a group home for abused children in San Francisco, a men's homeless shelter in Coatesville, and he is currently an intern at the Behavioral Health unit of Brandywine Hospital. He is particularly interested in the impact of Adverse Childhood Experiences (ACEs) and trauma-informed therapy.

## PROGRAM DESCRIPTION

This program will consider the meaning and expressions of love from a psychoanalytic perspective as portrayed in film. The medium of film will allow us to explore the developmental, intra psychic and interpersonal manifestations of one of our most basic emotions.

## EDUCATIONAL OBJECTIVES

At the end of this presentation, participants will be able to:

1. From a Psychoanalytic perspective, describe how love is portrayed in contemporary film
2. What does psychoanalytic thinking add to our understanding of love in the modern world?
3. How does the notion of love change through different developmental stages of life?

## CONTINUING MEDICAL EDUCATION/CONTINUING EDUCATION

### **Continuing Medical Education (CME):**

This activity has been planned and implemented in accordance with the accreditation requirements and policies of the Accreditation Council for Continuing Medical Education (ACCME) through the joint providership of American Psychoanalytic Association and the Psychoanalytic Center of Philadelphia. The American Psychoanalytic Association is accredited by the ACCME to provide continuing medical education for physicians.

The American Psychoanalytic Association designates this Live Activity for a maximum of 3 AMA PRA Category 1 Credit(s)<sup>™</sup>. Physicians should claim only the credit commensurate with the extent of their participation in the activity.

**IMPORTANT DISCLOSURE INFORMATION FOR ALL LEARNERS:** None of the planners and presenters of this CME program have any relevant financial relationships to disclose.



### **Continuing Education for Psychologists (CE):**

The Psychoanalytic Center of Philadelphia is approved by the American Psychological Association to sponsor continuing education for psychologists. The Psychoanalytic Center of Philadelphia maintains responsibility for this program and its content. Every session of this program offers CE credit for psychologists.

**Continuing Education for Social Workers, Marriage and Family Therapists, and Professional Counselors (CE):** In accordance with the requirements of the Commonwealth of PA dated 12/23/06 [PA Code: Title 49, Ch. 47-49], The State Board of Social Workers, Marriage and Family Therapists, and Professional Counselors recognizes the American Psychological Association (APA) as a preapproved provider of continuing education programs for social workers and clinical social workers, marriage and family therapists, and professional counselors in the State of Pennsylvania. The Psychoanalytic Center of Philadelphia is approved by the American Psychological Association to sponsor continuing education programs.

**For more information, please contact the administrative office of the Psychoanalytic Center of Philadelphia:**

Rockland - East Fairmount Park  
3810 Mt. Pleasant Drive  
Philadelphia, PA 19121  
215-235-2345  
[pcop@philanalysis.org](mailto:pcop@philanalysis.org)

### **Location of All Events**

Rockland—  
East Fairmount Park  
3810 Mt. Pleasant Drive  
Philadelphia, PA 19121  
215-235-2345

3 CE/CME credits available per film

**Free for PCOP Members**  
**Free for Non-Members not Seeking Credit**  
**\$75 for Non-Members Seeking Credit (per film)**

Register online at [www.philanalysis.org](http://www.philanalysis.org)