

Resilience in Response to Violence & War: Children, Adolescents, & Adults

Saturday, March 7, 2026

10:00 AM - 1:30 PM EST via Zoom

3.5 CE/CME Available

Ann Masten, PhD, LP

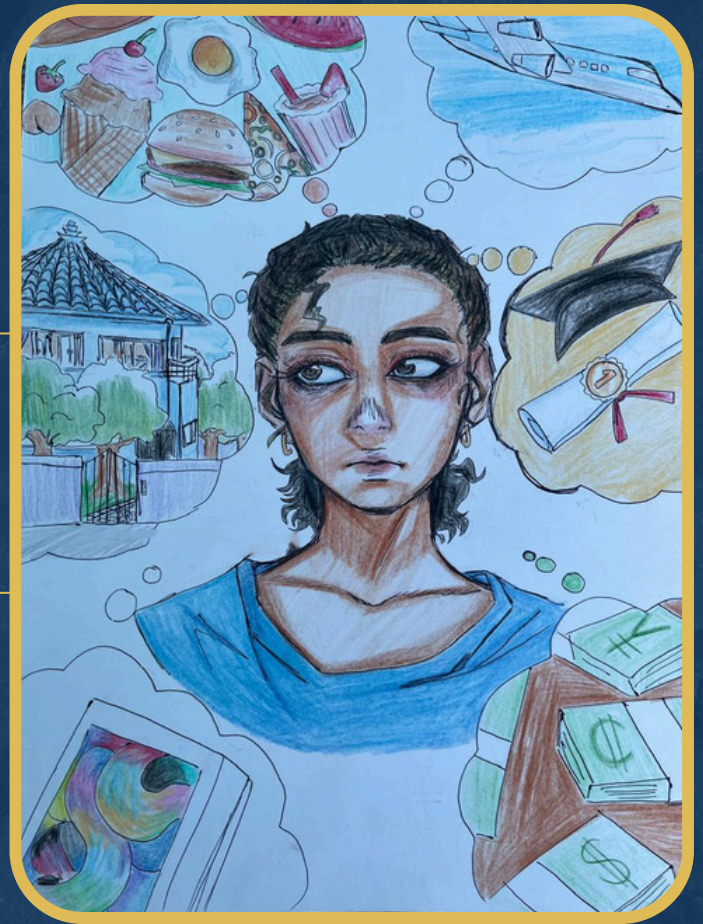
*Regents Professor, McKnight University Professor
University of Minnesota*

Merav Roth, PhD

*Training Analyst, Associate Professor
School of Therapy, Counseling, and Human
Development University of Haifa*

Salem Eid S. Al Arjani, PhD

*Psychoanalytic Psychotherapist, Trauma
Researcher & Director of the Mental Health
Program at Gaza Children Village*



About the Program

This year, the Henri Parens Symposium will focus on resilience in the face of violence and war. Our speakers will be **Ann Masten, PhD, LP**, a distinguished researcher on resilience, and **Merav Roth, PhD**, Training Analyst and world-renowned trauma expert, and one of the organizers of the psychoanalytic on-the-ground response to the 10/7/23 attacks in Israel.

Dr. Masten calls resilience “ordinary magic”, a combination of a person’s own adaptive system and their supportive connections with others. In Dr. Masten's research, she has found that resilience is more common than we may think, even in response to violence and war.

Dr. Roth bears witness to the extraordinary resilience of the human spirit through her work with those who have endured profound trauma.

A case presentation will be made by **Salem Eid S. Al Arjani, PhD**, a Palestinian psychoanalytic psychotherapist, trauma researcher, and Director of the Mental Health Program at Gaza Children’s Village, illustrating resilience in the face of violence and war.

REGISTER HERE



About the Speakers

Ann Masten, PhD, LP, is Regents Professor Emerita at the University of Minnesota (UMN). She studies resilience in human development, particularly in the context of homelessness, poverty, disaster, war, migration, and military service. She is a past President of the Society for Research in Child Development (SRCD) and Division 7 (Developmental) of the American Psychological Association (APA). Her honors include the 2025 APF Gold Medal for Impact in Psychology and 2025 SRCD Distinguished Scientific Contributions to Child Development Award, the 2024 Grawemeyer Award in Psychology, and honorary degrees from Erasmus University of Rotterdam and Colgate University. She was elected to the American Academy of Arts and Sciences in 2021. Thousands of participants from more than 180 countries have taken her free online course on “Resilience in Children Exposed to Trauma, Disaster and War.” Dr. Masten has published more than 300 scholarly works.. Her autobiography is included in the 2025 volume, Pillars of Developmental Psychology, and the second edition of her book, Ordinary Magic: Resilience in Development also was published in 2025.

Professor Merav Roth, PhD, is a clinical psychologist, a training psychoanalyst, a teaching professor and chair of The “Interweaving” center for culturally sensitive therapy at the School of Therapy, Counseling and Human Development, University of Haifa. She is a leading figure in providing Israeli mental health aid after the October 7th massacre, one of the establishers of Kibbutz Beer’s mental health aid, Co-founder and co-chair of FLM (First Line Med), a civil organization providing long term, free of charge therapy for the victims of the massacre and their family members that received the PACE (Psychoanalytic Assistance in Crises and Emergencies) Award by the International Psychoanalytic Association. She provides counseling to the Israeli Coalition of Trauma and to the Israeli Hostages and Missing Families Forum. Roth is the author of numerous papers, chapters and books on literature, trauma, and ethics. She is a recipient of the Sigourney Award for “extraordinary interdisciplinary work on psychoanalysis and literature and pioneering psychoanalytic study and treatment of trauma”. Link for donations to FLM: [Click here.](#)

Salem Eid S. Al Arjani, PhD, is a psychoanalytic psychotherapist and trauma researcher based in Gaza. He holds a PhD in Psychological Counseling from Al-Aqsa University and completed advanced training in dynamic psychoanalysis for children and adolescents at the Binational School, Jerusalem / Hadassah Medical Center. He is also certified in EMDR through EMDR for Peace. Since the outbreak of the war, Dr. Al Arjani has worked extensively with children and adolescents affected by war-related trauma and forced displacement. Having himself experienced repeated displacement, his clinical work integrates lived experience with psychoanalytic theory, emphasizing ethical, relational, and existential dimensions of trauma. He has published widely on trauma, violence, adaptation, and self-transcendence, and is the author of The Boundless Self (2024) and The Psychology of Values (2025). He currently serves as Director of the Mental Health Program at Gaza Children Village, overseeing services for over 7,000 children across five educational academies.

EDUCATIONAL OBJECTIVES

At the end of this presentation, participants will be able to:

1. Define resilience from a multisystem developmental perspective, and explain the concept of “ordinary magic”.
2. Describe the threshold where an overwhelming experience becomes a trauma.
3. Describe the opposing currents within the psyche — the pull toward repetition, silence, and despair, and the counterforces of love, ethical standing, and creativity — through which recovery and renewal become possible.

CONTINUING MEDICAL EDUCATION/CONTINUING EDUCATION

Continuing Medical Education (CME):

This activity has been planned and implemented in accordance with the accreditation requirements and policies of the Accreditation Council for Continuing Medical Education (ACCME) through the joint providership of American Psychoanalytic Association and the Psychoanalytic Center of Philadelphia. The American Psychoanalytic Association is accredited by the ACCME to provide continuing medical education for physicians.

The American Psychoanalytic Association designates these Live Activities for a maximum of 2.75 AMA PRA Category 1 Credit(s)™. Physicians should claim only the credit commensurate with the extent of their participation in the activity.

IMPORTANT DISCLOSURE INFORMATION FOR ALL LEARNERS: None of the planners and presenters of this CME program have any relevant financial relationships to disclose.



Continuing Education for Psychologists (CE):

The Psychoanalytic Center of Philadelphia is approved by the American Psychological Association to sponsor continuing education for psychologists. The Psychoanalytic Center of Philadelphia maintains responsibility for this program and its content. Every session of this program offers CE credit for psychologists.

Continuing Education for Social Workers, Marriage and Family Therapists, and Professional Counselors (CE): In accordance with the requirements of the Commonwealth of PA dated 12/23/06 [PA Code: Title 49, Ch. 47-49], The State Board of Social Workers, Marriage and Family Therapists, and Professional Counselors recognizes the American Psychological Association (APA) as a preapproved provider of continuing education programs for social workers and clinical social workers, marriage and family therapists, and professional counselors in the State of Pennsylvania. The Psychoanalytic Center of Philadelphia is approved by the American Psychological Association to sponsor continuing education programs.

For more information, please contact the Psychoanalytic Center of Philadelphia:

Rockland – East Fairmount Park
3810 Mt. Pleasant Drive Philadelphia, PA 19121
215-235-2345
pcop@philanalysis.org

The Psychoanalytic Center of Philadelphia is committed to reasonable accommodations for any member or program attendee with a disability unless doing so would cause significant hardship to the organization. Advance written notice is necessary to arrange for some accessibility needs. To request accommodations for this program, please [click here](#) to complete an Accommodation Request Form.

Image Courtesy of [Save the Children](#) ©